

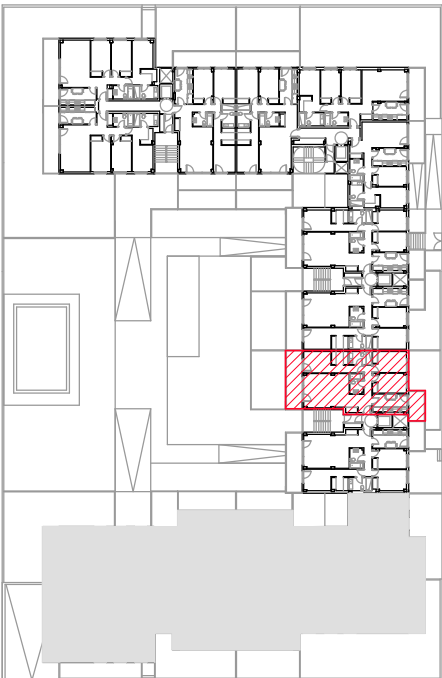


SUPERFICIE ÚTIL T18

| | |
|----------------|-----------------------|
| RECIBIDOR | 3,60 m ² |
| COCINA | 9,10 m ² |
| SALÓN | 24,60 m ² |
| DISTRIBUIDOR | 3,30 m ² |
| BAÑO I | 4,45 m ² |
| BAÑO II | 3,80 m ² |
| DORMITORIO I | 15,30 m ² |
| DORMITORIO II | 10,40 m ² |
| DORMITORIO III | 9,60 m ² |
| <hr/> | |
| TERRAZA I | 13,40 m ² |
| TERRAZA II | 6,80 m ² |
| <hr/> | |
| TOTAL | 84,15 m ² |
| <hr/> | |
| TERRAZA I | 13,40 m ² |
| TERRAZA II | 6,80 m ² |
| <hr/> | |
| TOTAL | 20,20 m ² |
| <hr/> | |
| TOTAL | 104,35 m ² |



SILK HOMES
E04-1°2°3°4° B



Fecha: 07/05/22