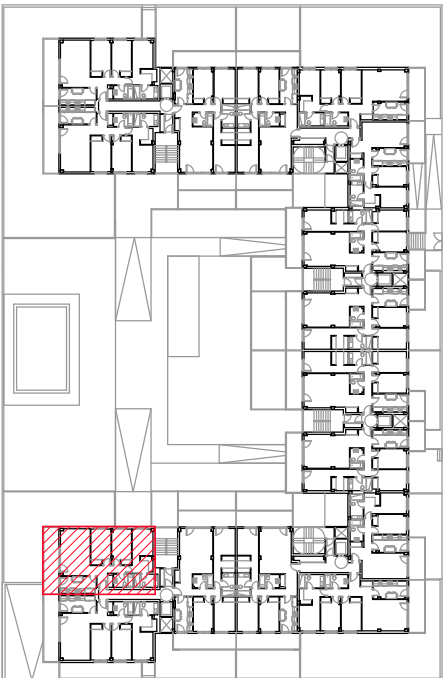


SUPERFICIE ÚTIL T12

|                |                            |
|----------------|----------------------------|
| RECIBIDOR      | 3,00 m <sup>2</sup>        |
| COCINA         | 9,00 m <sup>2</sup>        |
| SALÓN          | 21,00 m <sup>2</sup>       |
| DISTRIBUIDOR   | 3,20 m <sup>2</sup>        |
| BAÑO I         | 4,55 m <sup>2</sup>        |
| BAÑO II        | 3,80 m <sup>2</sup>        |
| DORMITORIO I   | 13,70 m <sup>2</sup>       |
| DORMITORIO II  | 10,20 m <sup>2</sup>       |
| DORMITORIO III | 10,30 m <sup>2</sup>       |
|                | 78,75 m <sup>2</sup>       |
| TERRAZA I      | 14,75 m <sup>2</sup>       |
|                | 14,75 m <sup>2</sup>       |
| <b>TOTAL</b>   | <b>93,50 m<sup>2</sup></b> |



SILK HOMES  
E06-1º2º3º4º B



Fecha: 07/05/22